



PIEDMONT TRIAD'S PREMIER HOME BUILDER

3 BEDROOMS | 2 BATHROOMS | 2,588 SQFT | 1.5 STORIES | 2 CAR GARAGE

Ellington

C6P



B6K



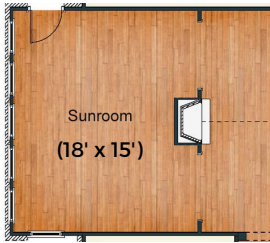
C6V



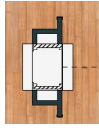
www.gokeystone.com



Building Communities to Enhance Lives!



Optional Sunroom ILO
Covered Lanai



Optional Double
Sided Fireplace
with Sunroom



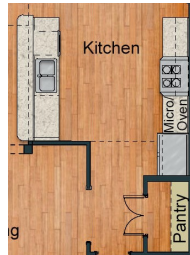
Optional Spa
Primary Bathroom



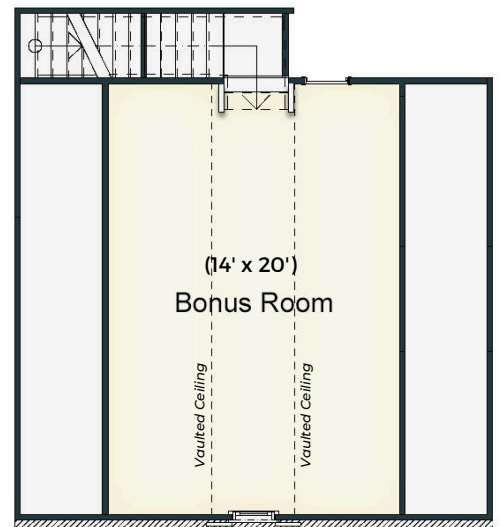
Optional Deluxe
Primary Bathroom



FIRST FLOOR



Optional Chef's Kitchen



SECOND FLOOR

*Homeplan layout reflecting Elevation B6K



Ellington



Keystone Homes is an Equal Housing Opportunity Builder. Home and community information, including pricing, included features, terms, availability, and amenities, are subject to change and prior sale at any time without notice or obligation. Pictures, photographs, colors, features, and sizes are for illustration purposes only and will vary from the homes as built. Square footage dimensions are approximate. Buyer should conduct his or her own investigation of the present and future availability of school districts and school assignments. Keystone Homes has no control or responsibility for any changes to school districts or school assignments should they occur in the future. Updated 6.5.24.